

NOMAD

INDEX

01_INTRODUCTION

02_LOCATION

03_AESTHETIC

04_LAND PROJECT

05_COMMUNITY HOUSE PROJECT

06_FINAL IMAGES



01_INTRODUCTION

CONCEPT DESIGN

Nomad Nation Village is a housing project designed for wanderers and remote workers. It contains housing units and co-living amenities, all connected by a series of natural paths and vegetation.



02_LOCATION

3708 Rock Quarry Rd, Raleigh, NC 27610, USA

The project is located in Raleigh, North Carolina, USA. More specifically at 3708 Rock Quarry Rd, Raleigh, NC 27610, USA. The site is surrounded on 3 sides by streets: Rock Quarry Road to the north, Sunnybrook Road to the west and Tryon Ridge Road to the south. To the east are other private lands separated by a tree line. It is a mostly residential area with some shops, school, hospital, church, and even a stadium/music park nearby.





03_AESTHETIC

Materials, colors, elements, keys for the project.

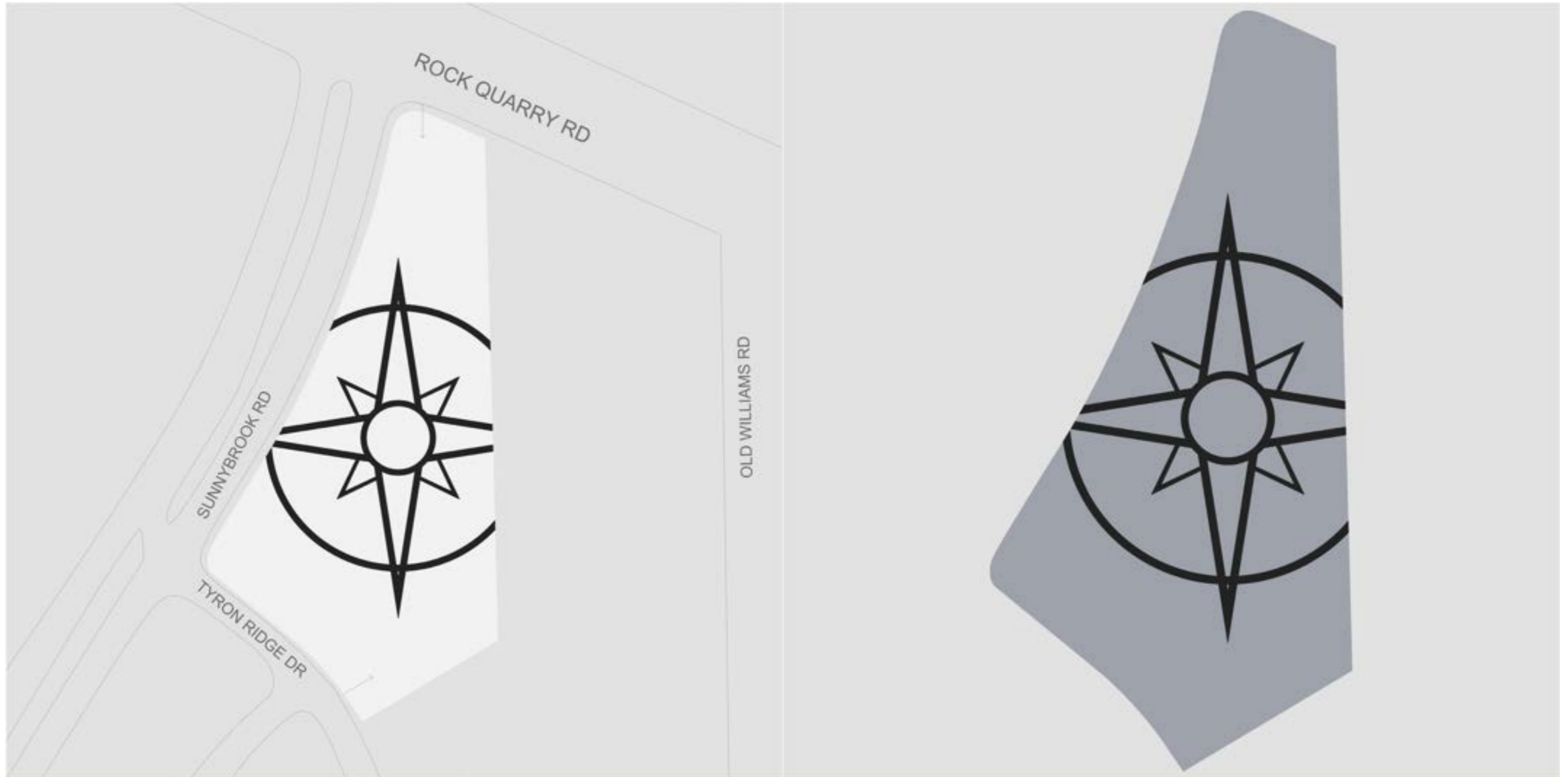
Iron as a simple and clean material, and wood is the one that gives warmth. Decks and bridges, and dark gray paths accompanied by vegetation. The project is dominated by dark colors, a palette of grays that contrast with the vegetation, the wood and the water of the lakes.



04_LAND PROJECT

TERRAIN

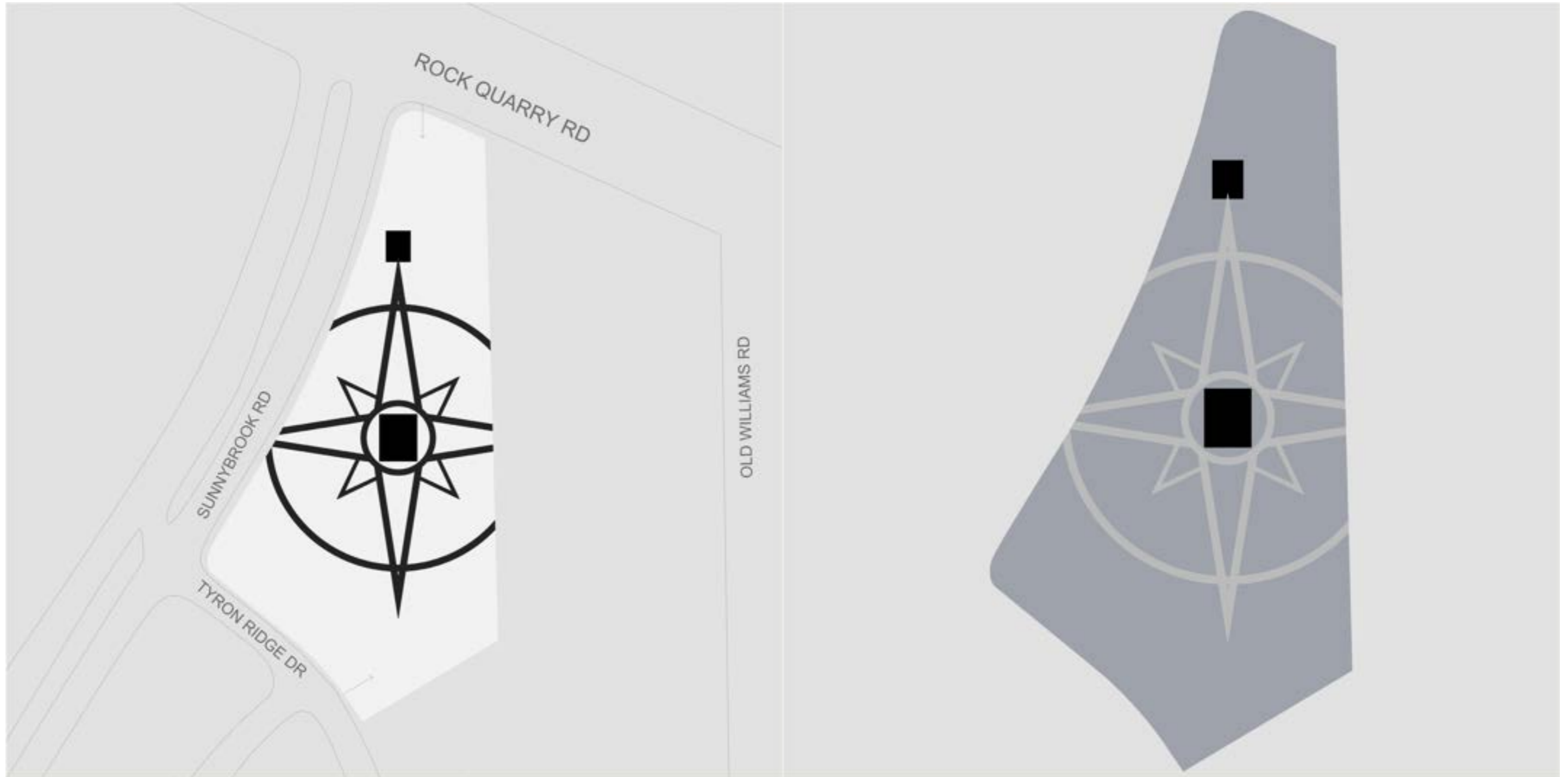
The project's primary access is to the north on Rock Quarry Rd, and the secondary access is to the south on Tryon Ridge Dr.



04_LAND PROJECT

COMPASS

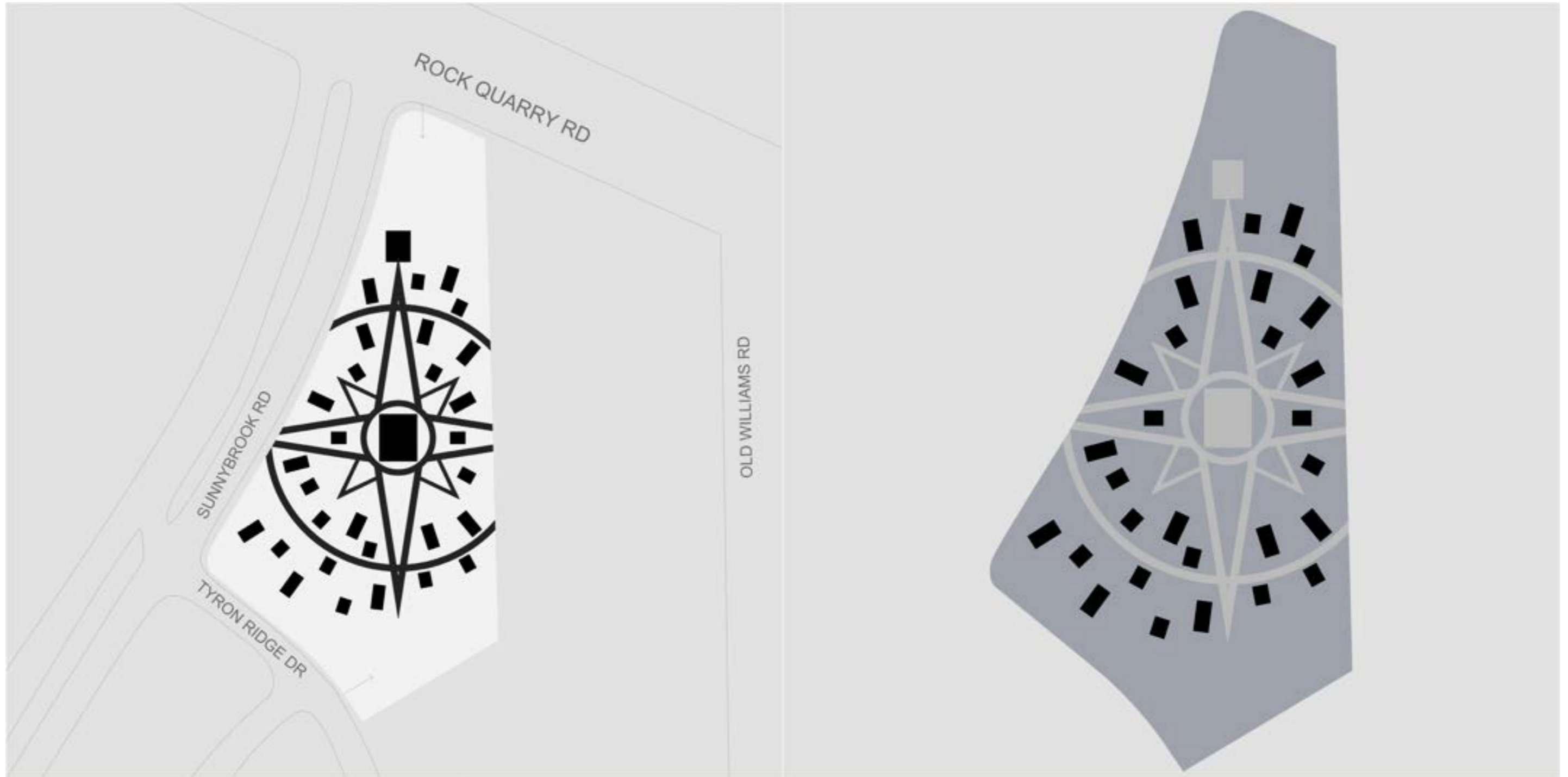
The compass is at the heart of the project, dividing the land and creating the main roads.



04_LAND PROJECT

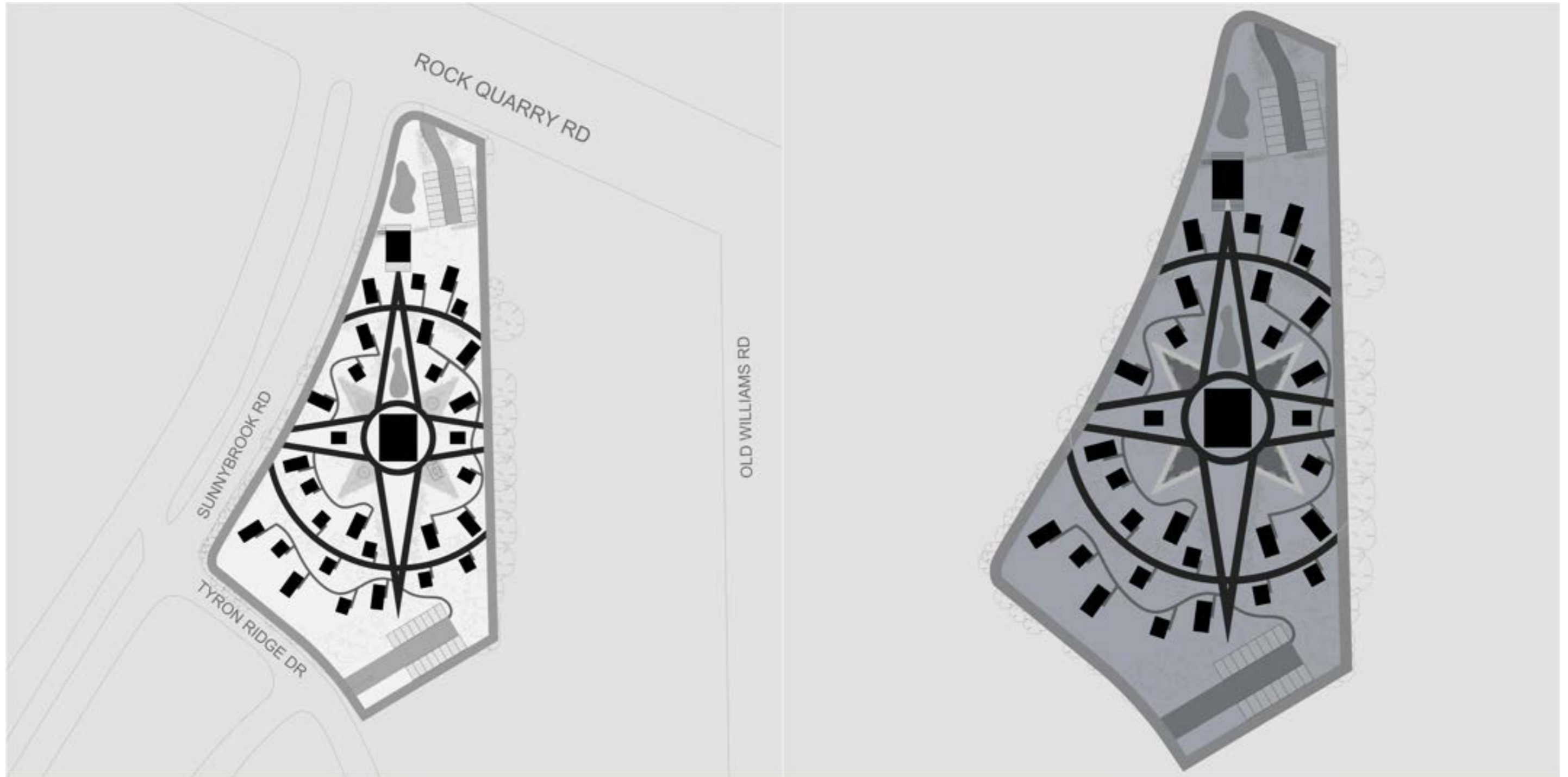
RECEPTION AND COMMUNITY HOUSE

The community house is located in the centre of the project, and aligned with it but to the north is the reception area near the entrance.



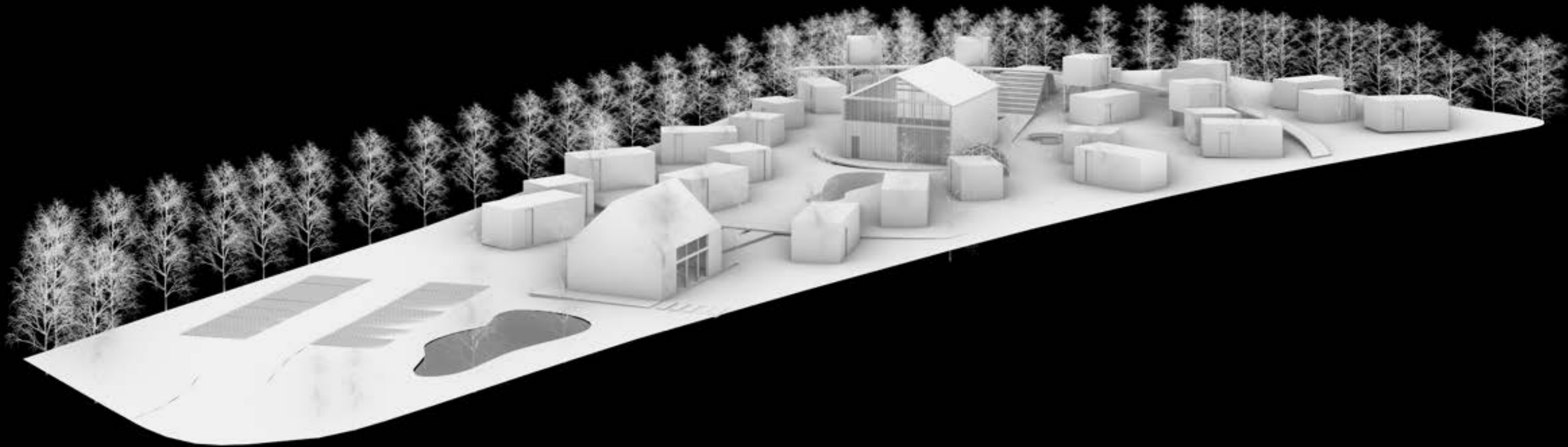
04_LAND PROJECT UNITS

The two types of units are then placed in relation to the compass and oriented towards the centre.

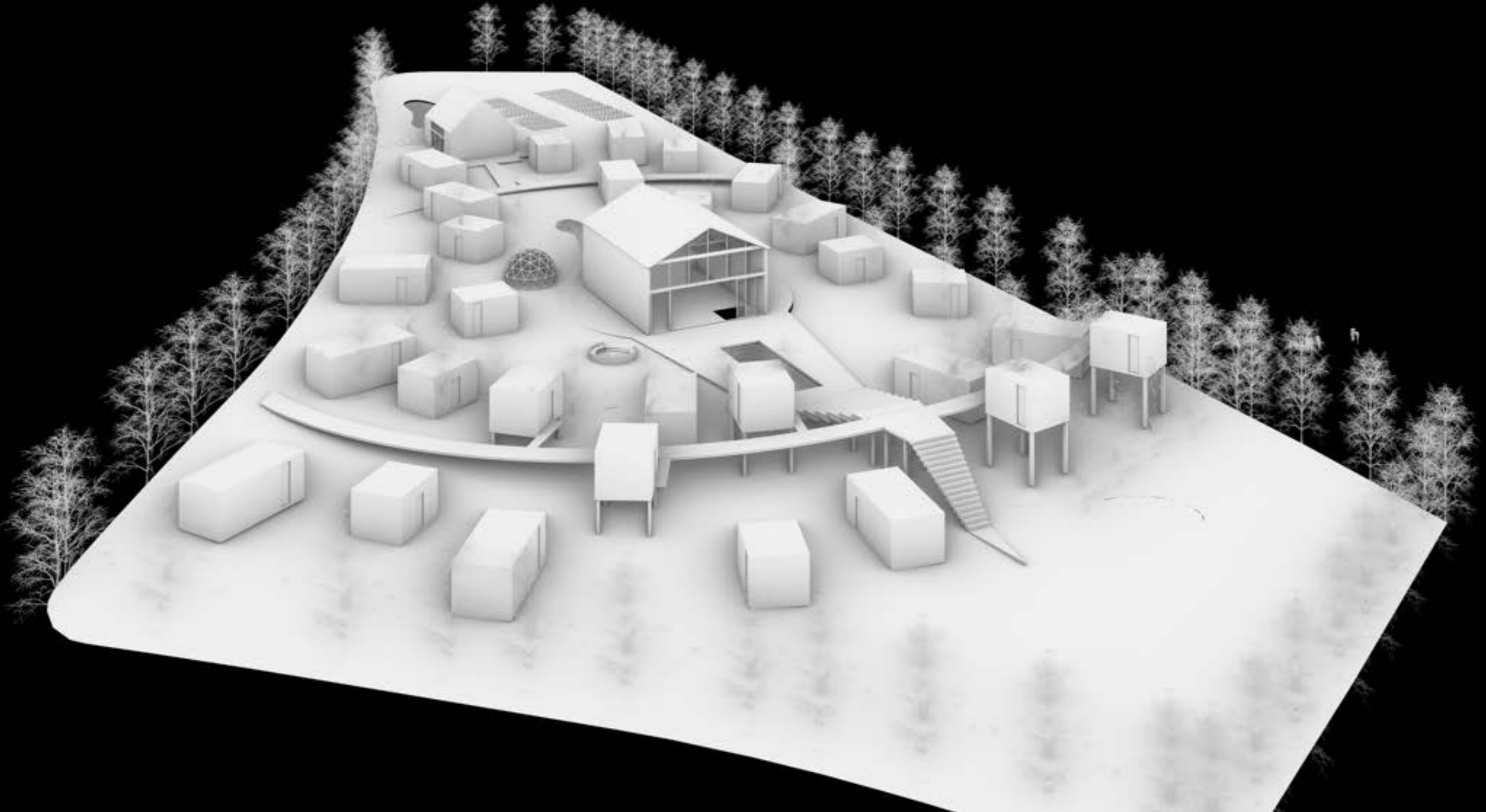


04_LAND PROJECT GENERAL PLAN

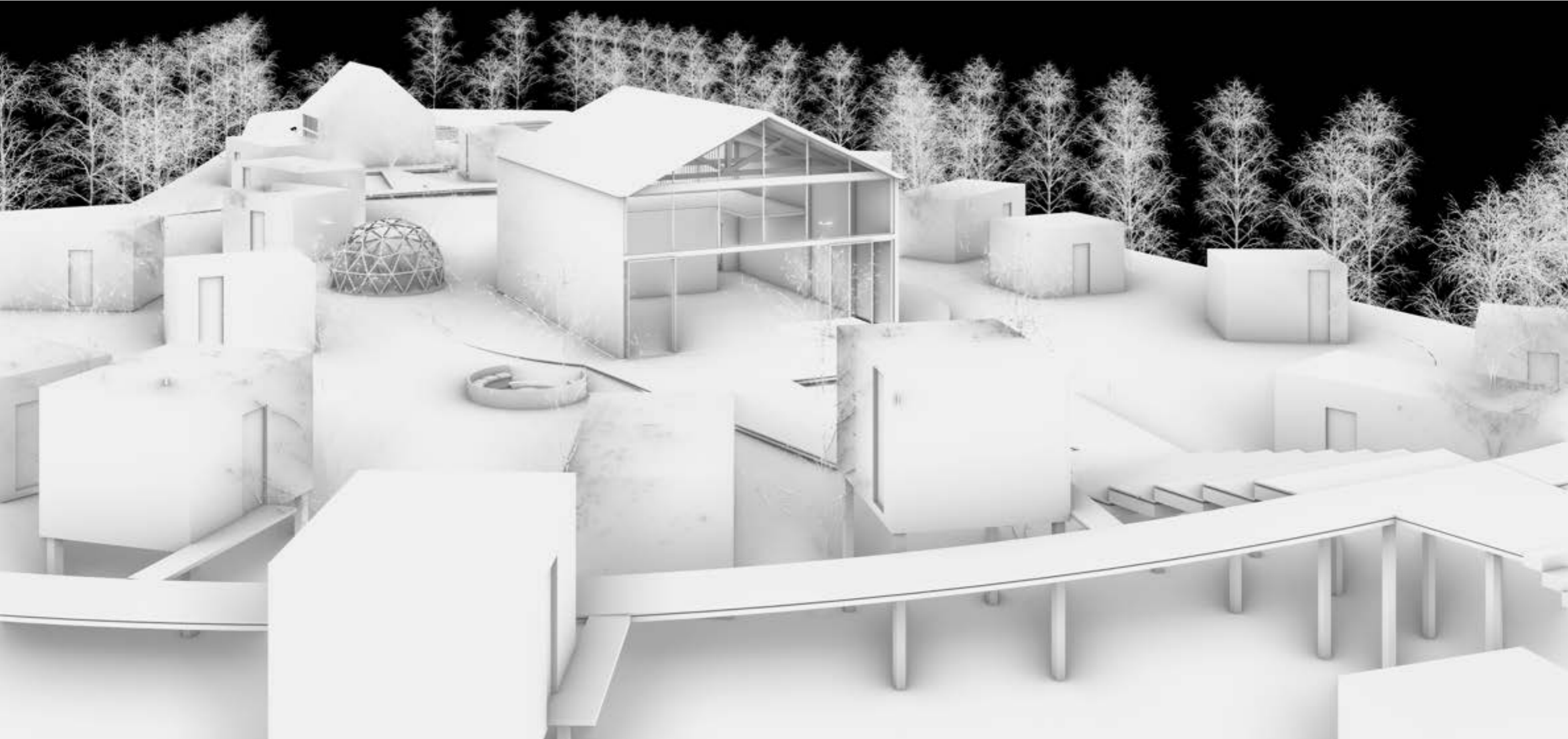
Then the secondary roads to the units, parking at the two entrances, artificial lagoons, amenity areas such as yoga room, swimming pool and barbecue are added.



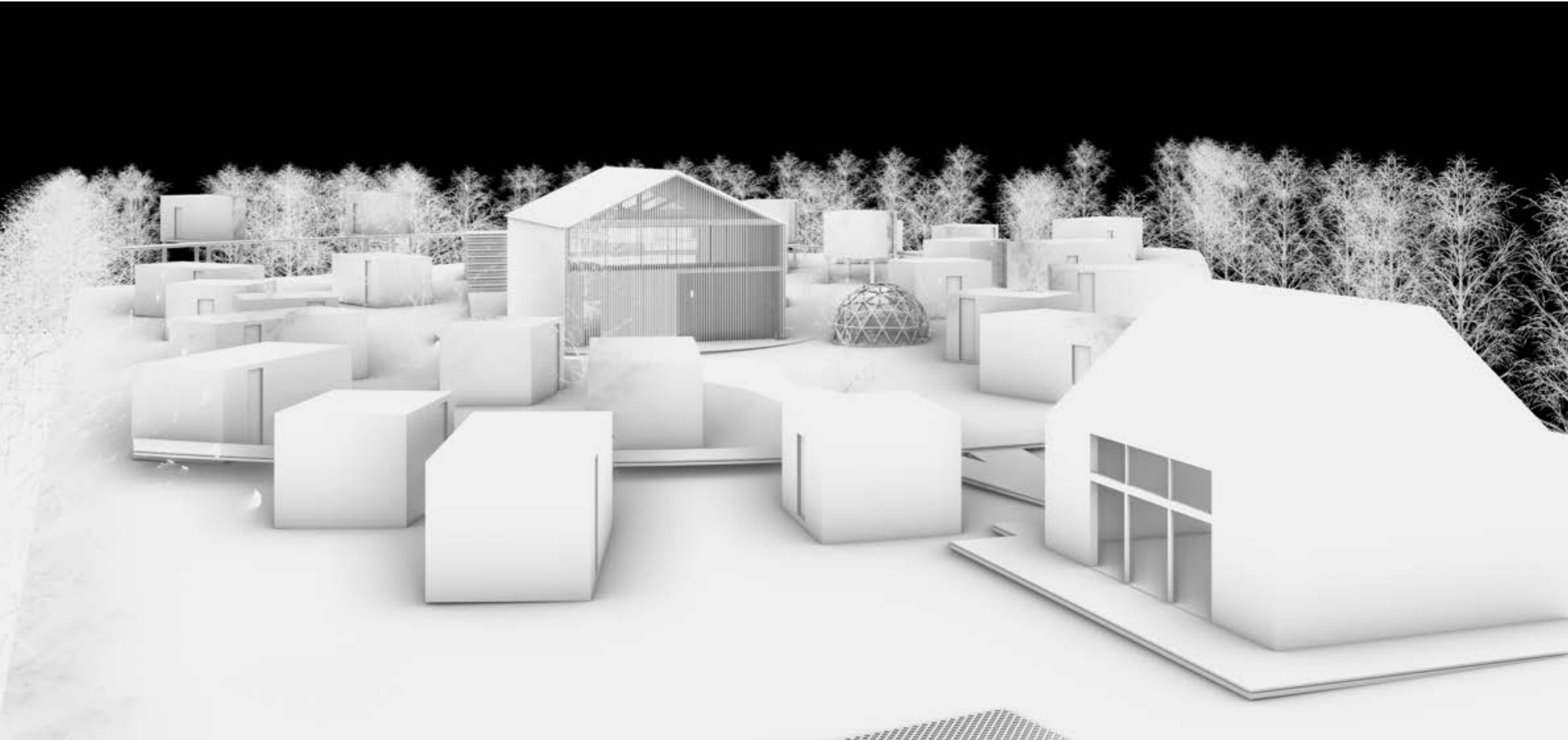
04_LAND PROJECT
SCHEMATIC IMAGES



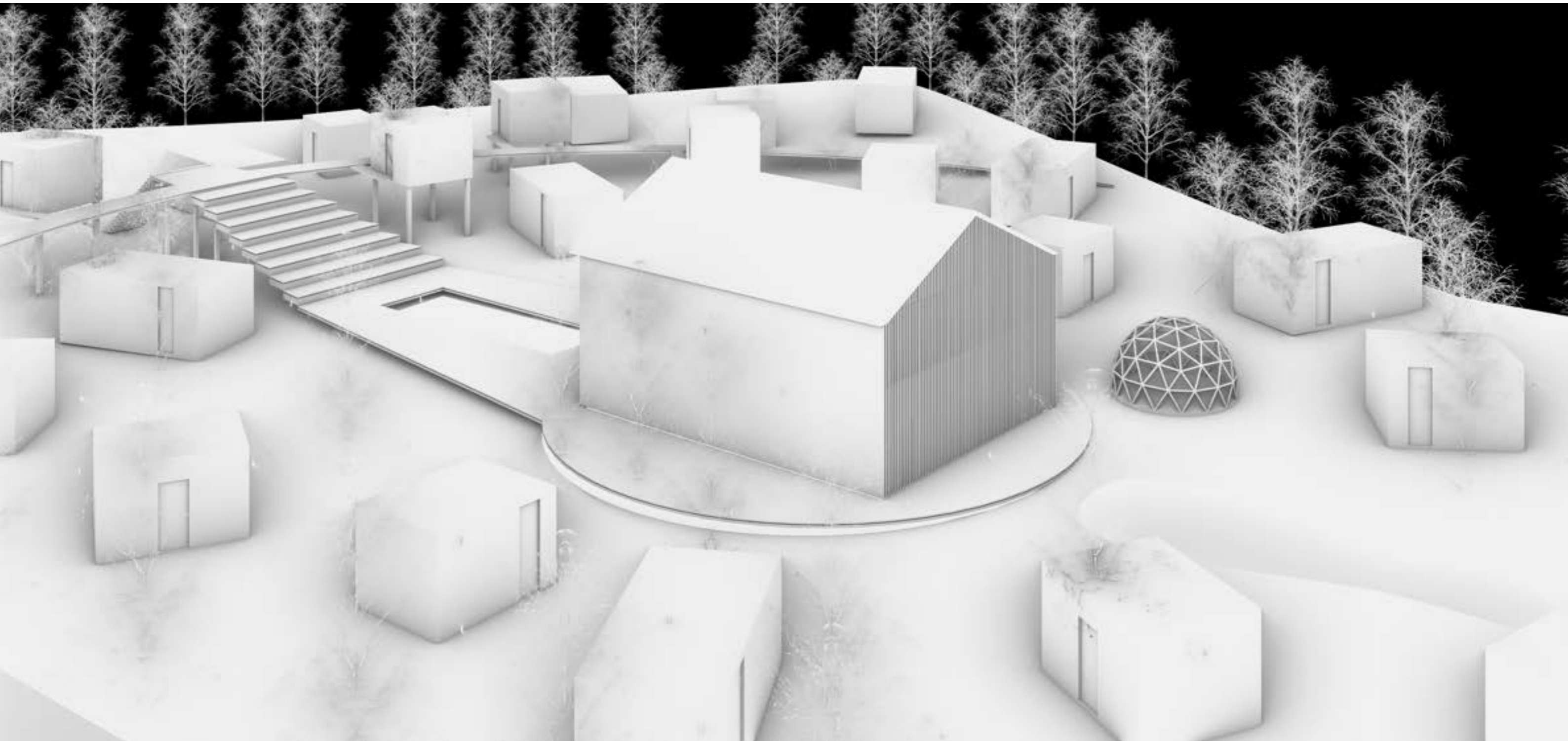
04_LAND PROJECT
SCHEMATIC IMAGES



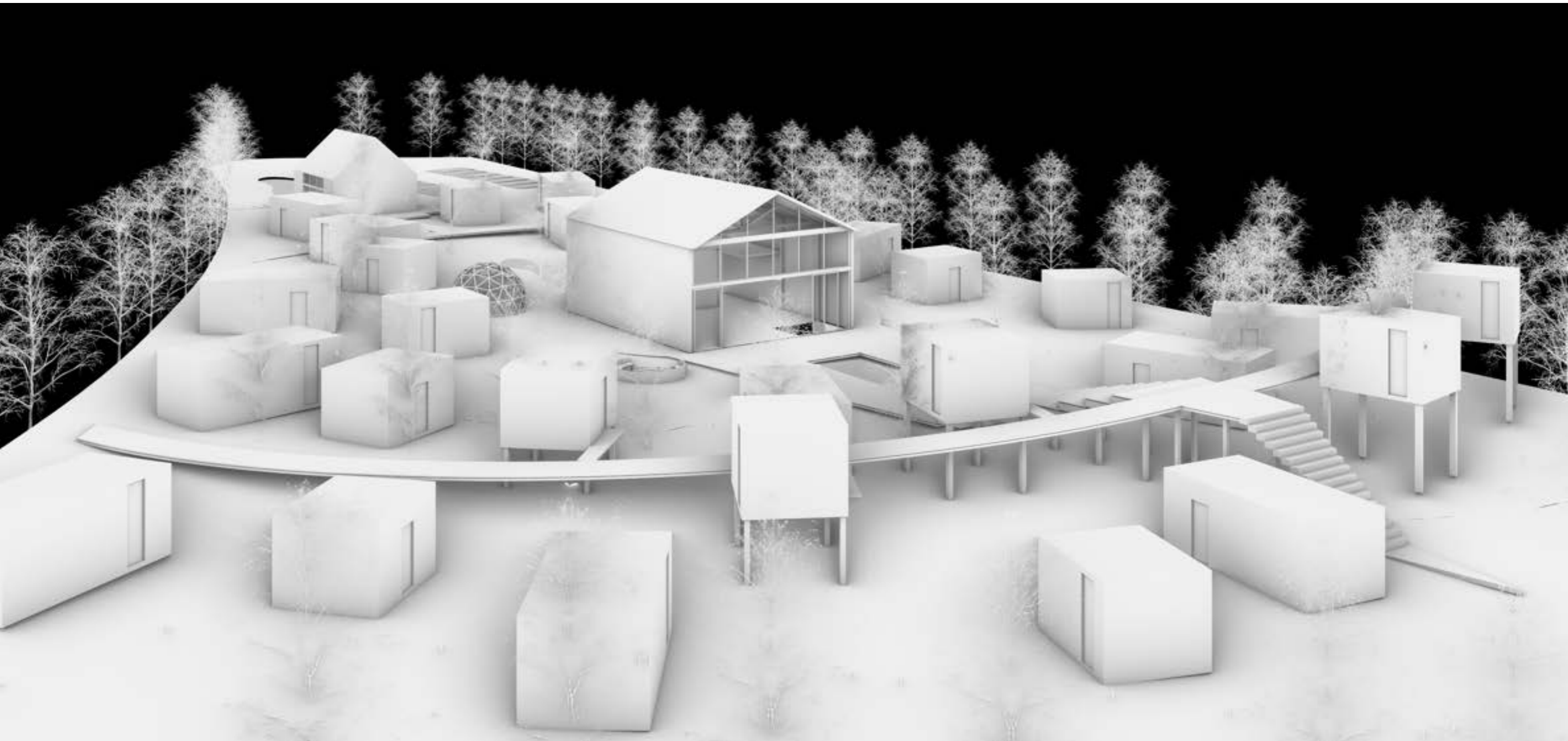
04_LAND PROJECT
SCHEMATIC IMAGES



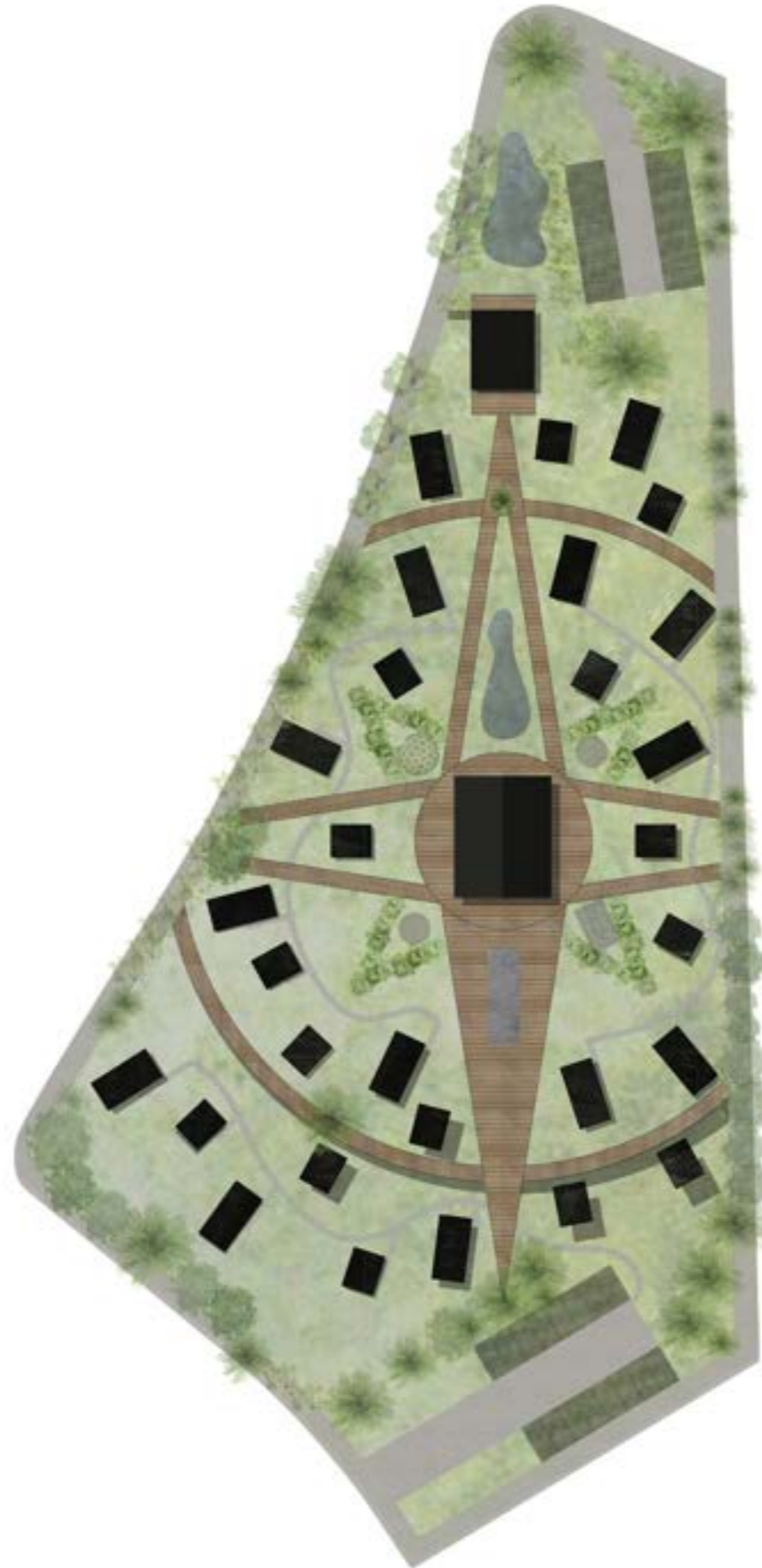
04_LAND PROJECT
SCHEMATIC IMAGES



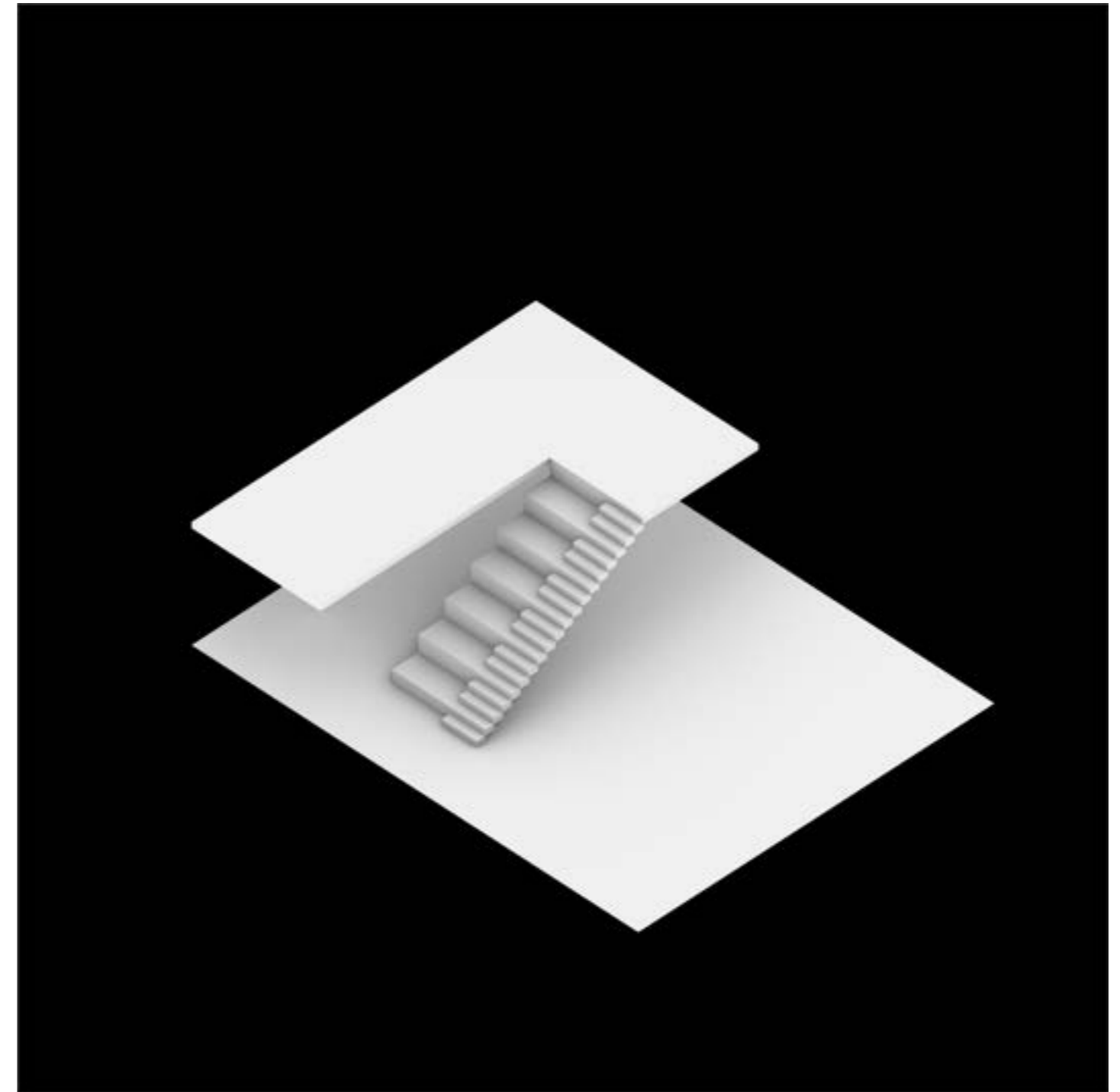
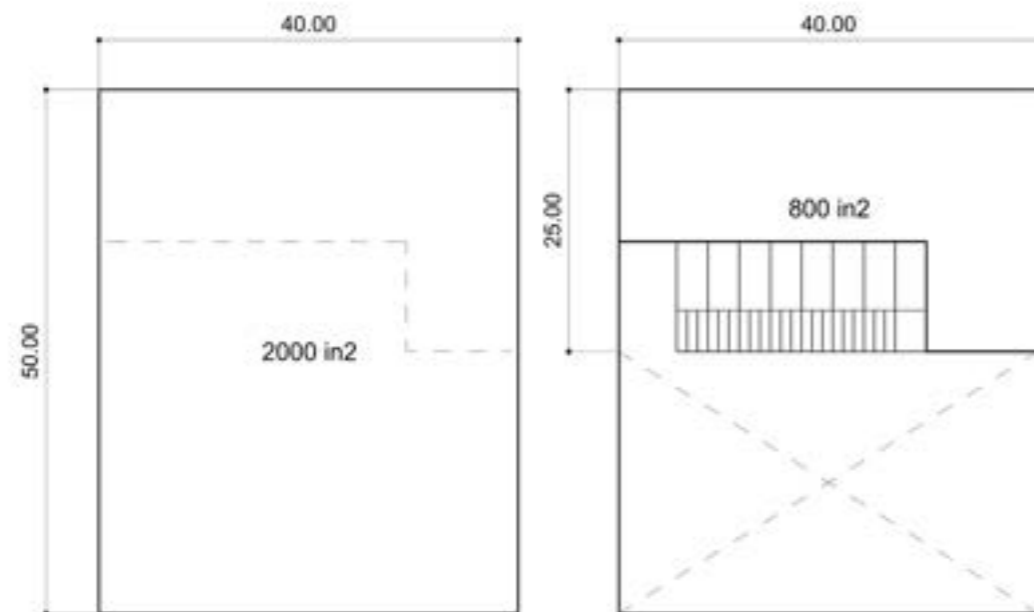
04_LAND PROJECT
SCHEMATIC IMAGES



04_LAND PROJECT
SCHEMATIC IMAGES

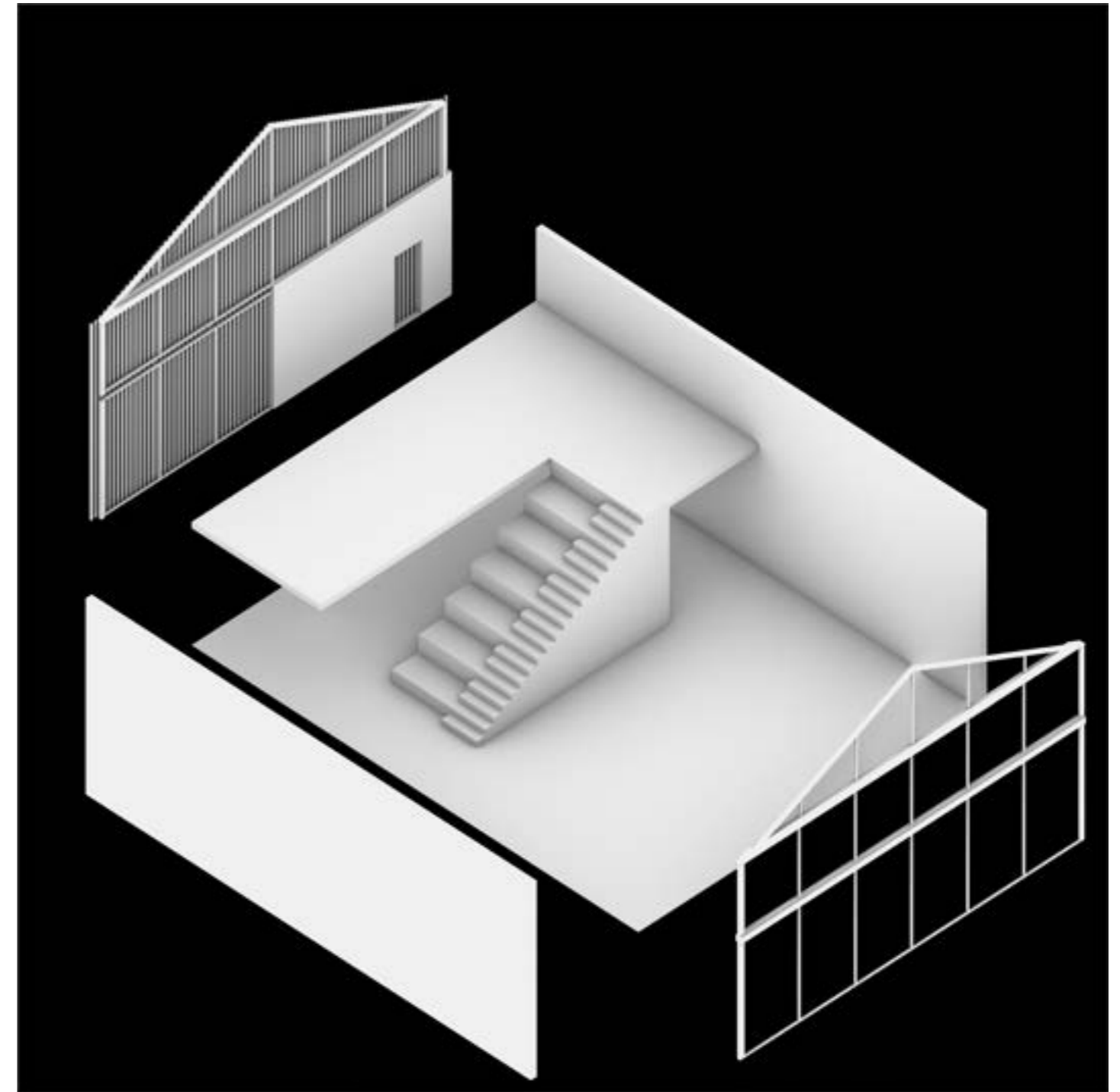
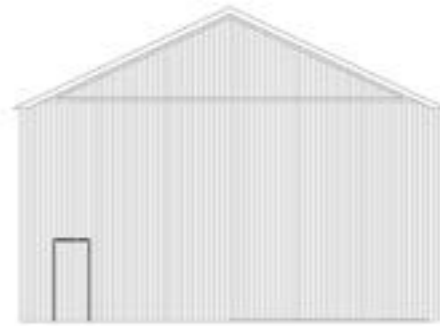


04_LAND PROJECT
PLAN



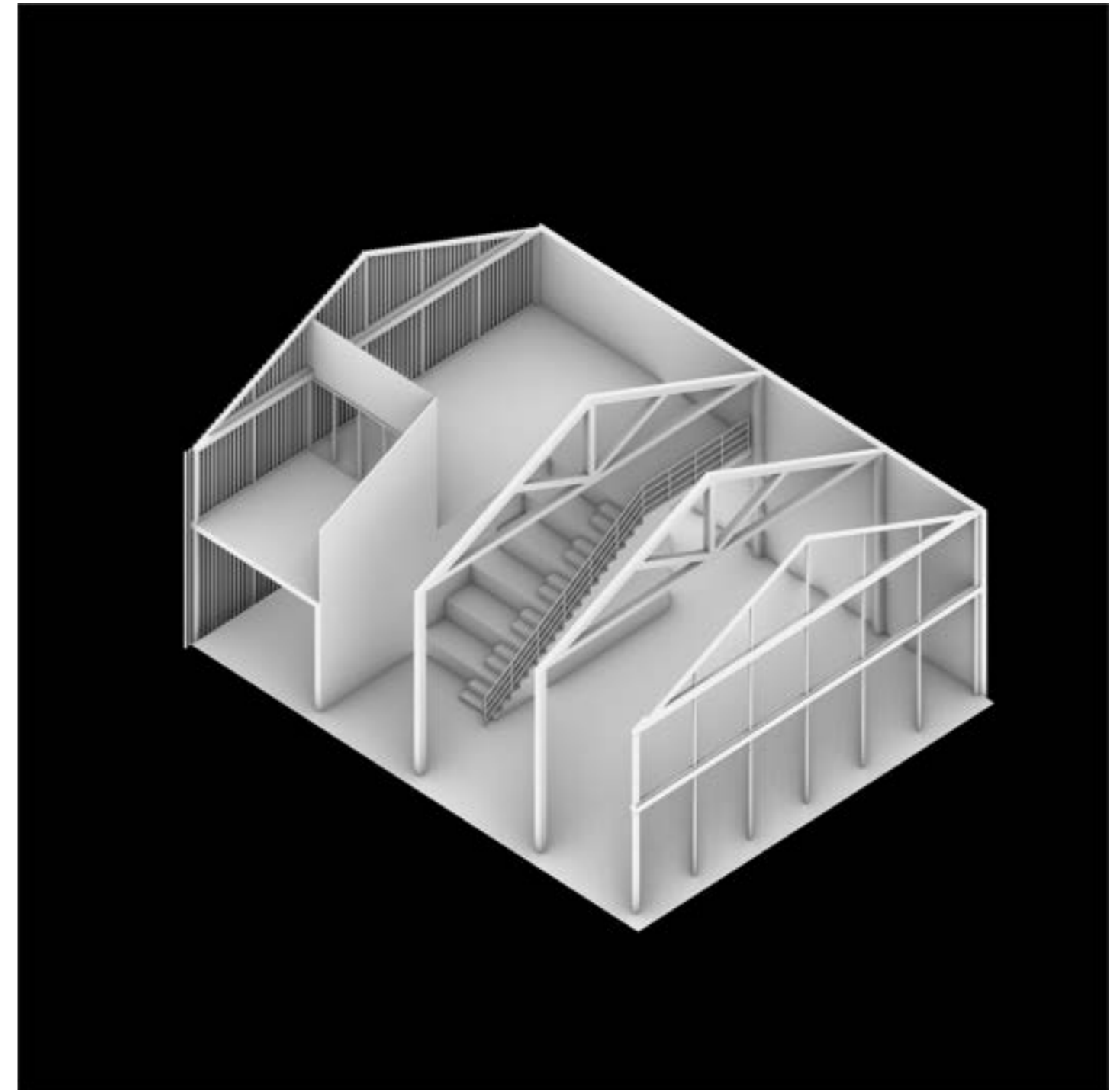
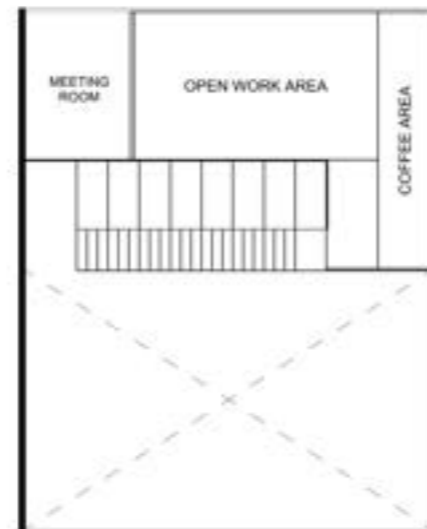
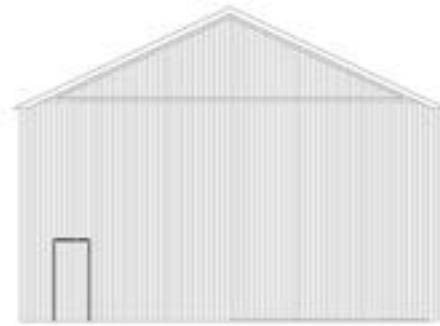
05_COMMUNITY HOUSE MEASURES

The community house is organised on one floor of 50x40 feet with a mezzanine of 25x40 feet.



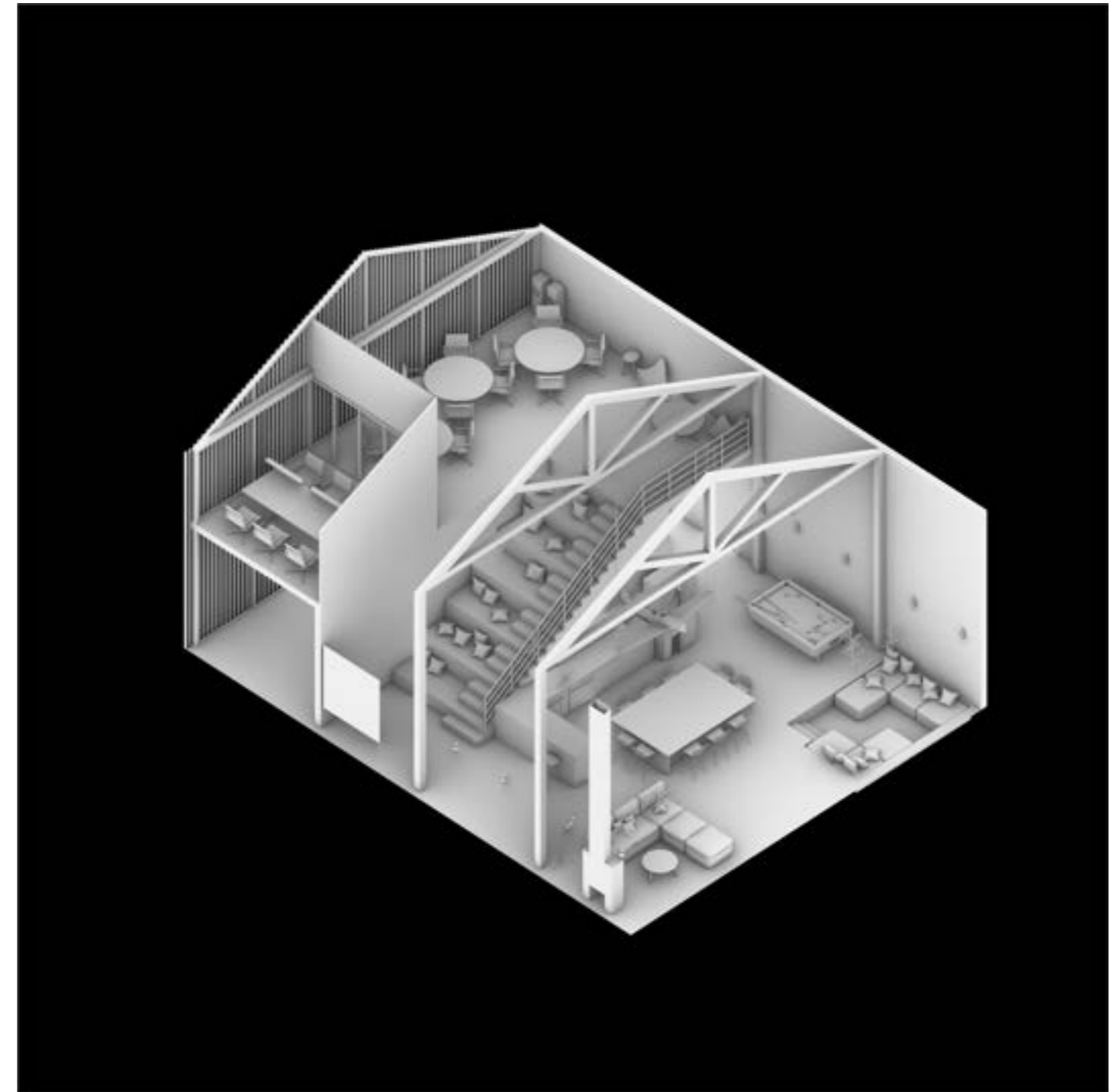
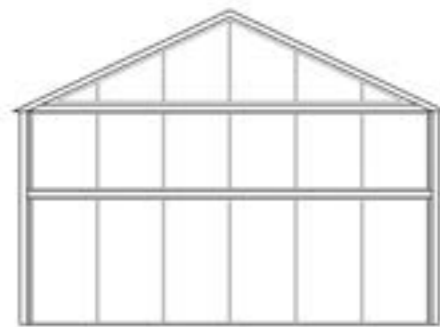
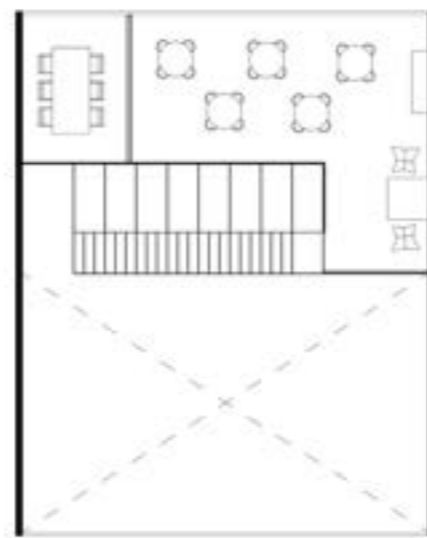
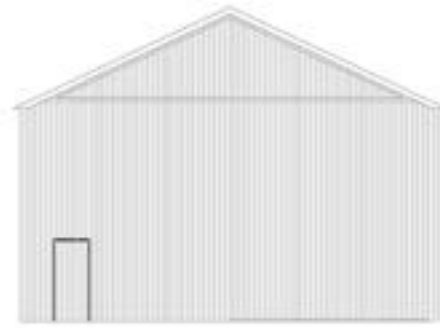
05_ COMMUNITY HOUSE GENERAL ORGANISATION

It is organised with a north-south relationship, in which the north is more closed and the more private programmes will be located, and on the contrary, the south will be more open, allowing light to enter the more public programmes.



05_COMMUNITY HOUSE AREAS

On the ground floor are the bathrooms, a gymnasium and a living room with integrated kitchen and games area. Behind the kitchen is the staircase that forms part of the amphitheatre/cinema. And on the mezzanine floor the entire coworking area with a meeting room that can be private or integrated into the coworking area.



05_COMMUNITY HOUSE

GENERAL PLAN

On the ground floor are the bathrooms, a gymnasium and a living room with integrated kitchen and games area. Behind the kitchen is the staircase that forms part of the amphitheatre/cinema. And on the mezzanine floor the entire coworking area with a meeting room that can be private or integrated into the coworking area.



05_COMMUNITY HOUSE PROJECT

SCHEMATIC IMAGES

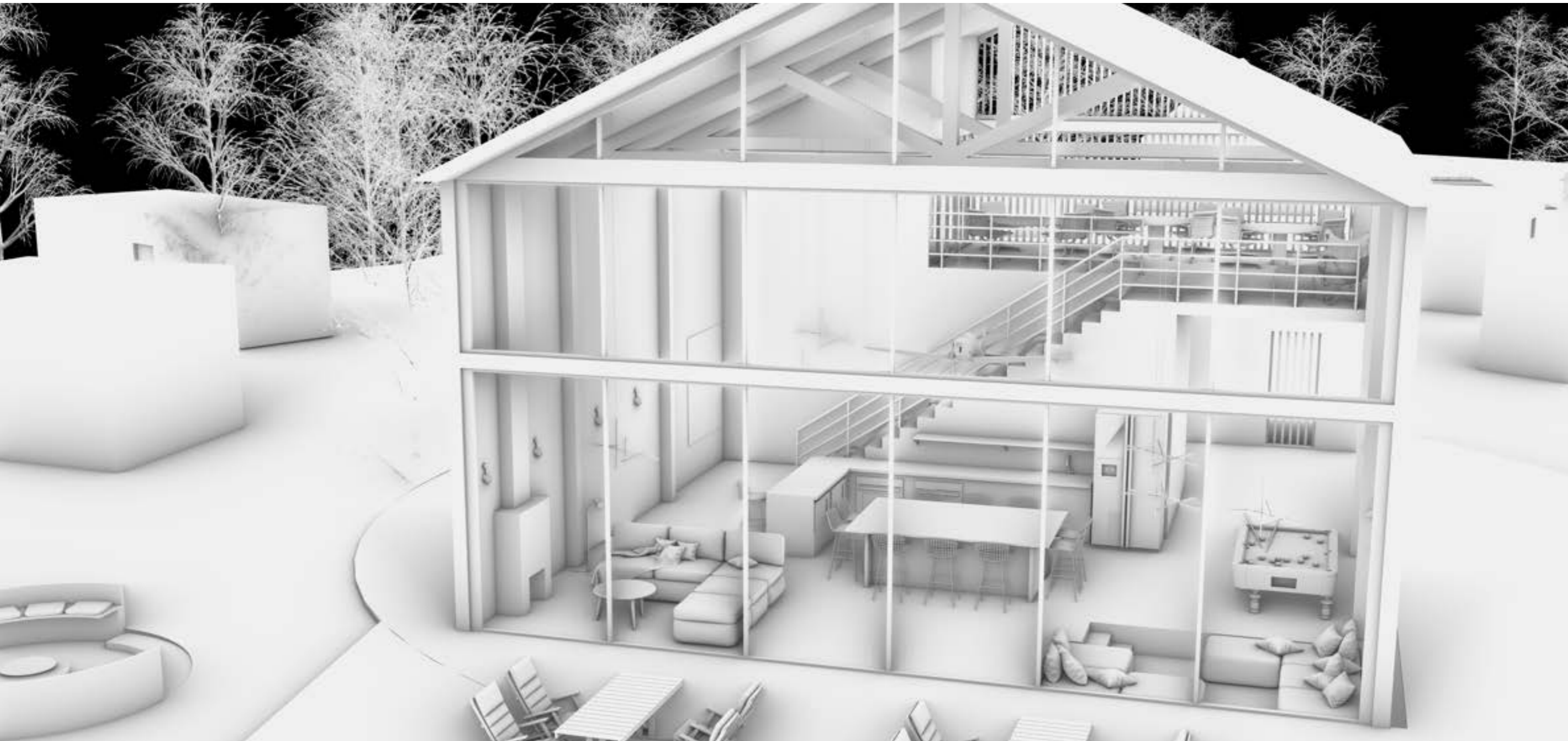


05_ COMMUNITY HOUSE PROJECT
SCHEMATIC IMAGES



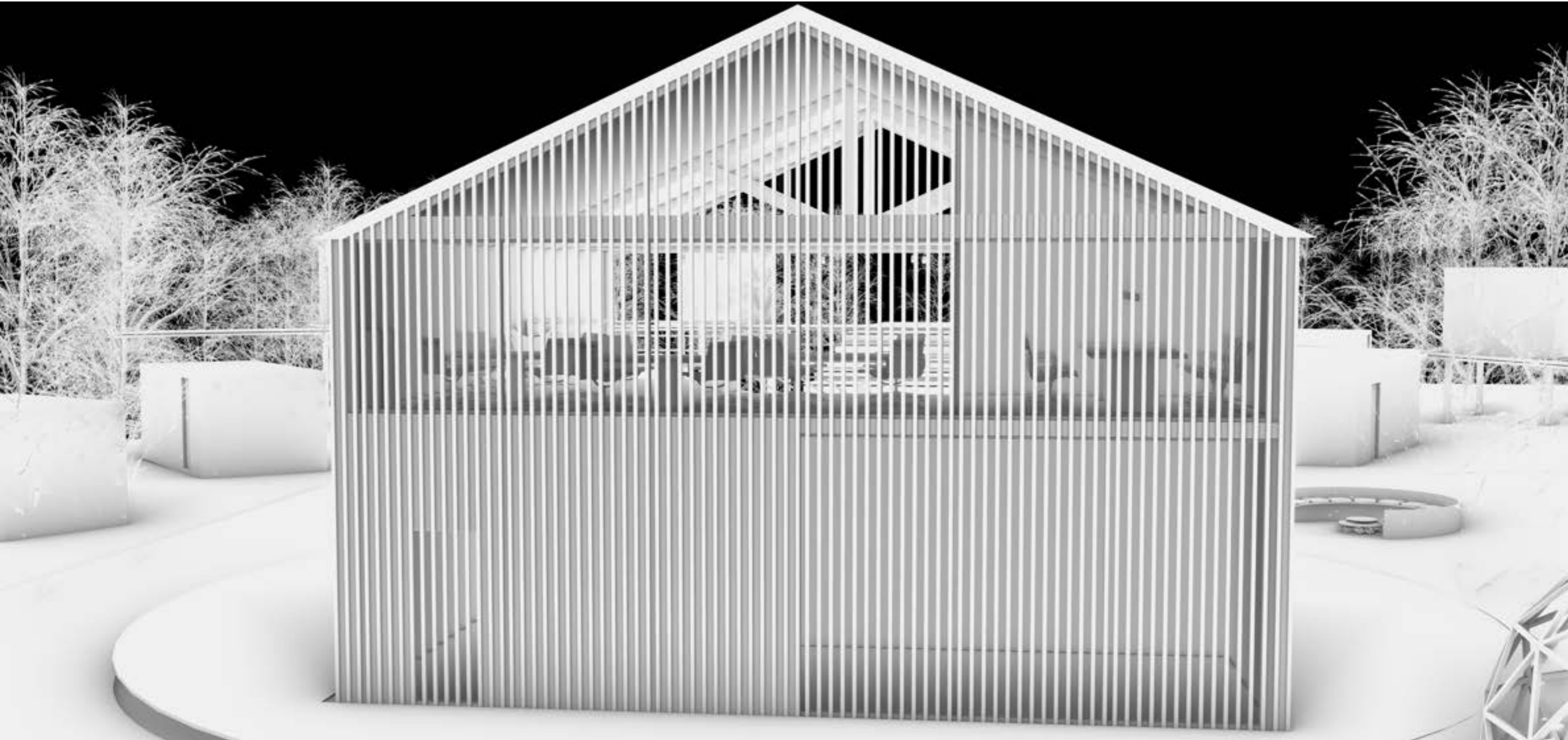
05_ COMMUNITY HOUSE PROJECT

SCHEMATIC IMAGES



05_ COMMUNITY HOUSE PROJECT

SCHEMATIC IMAGES



05_ COMMUNITY HOUSE PROJECT
SCHEMATIC IMAGES



05_ COMMUNITY HOUSE PROJECT
SCHEMATIC IMAGES



06_FINAL IMAGES
LAND



06_FINAL IMAGES
LAND



06_FINAL IMAGES
LAND



06_FINAL IMAGES
LAND



06_FINAL IMAGES
LAND



06_FINAL IMAGES
LAND



06_FINAL IMAGES
LAND



06_FINAL IMAGES
LAND



06_RENDERERS
COMMUNITY HOUSE



06_FINAL IMAGES
COMMUNITY HOUSE



06_FINAL IMAGES
COMMUNITY HOUSE



06_FINAL IMAGES
COMMUNITY HOUSE



06_FINAL IMAGES
COMMUNITY HOUSE



06_FINAL IMAGES
COMMUNITY HOUSE



06_FINAL IMAGES
COMMUNITY HOUSE



06_FINAL IMAGES
COMMUNITY HOUSE



06_FINAL IMAGES
COMMUNITY HOUSE